

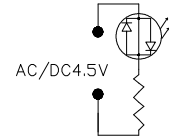
## E5 AC/DC Screw LED Lamp

E5 AC/DC Screw LED Lamp is 2pcs of LED paralleled together in opposite direction and requires a resistor in series to permit direct connection to AC/DC 4.5V.

**Photo**



**Circuit Diagram**



### ■ Features

- High Luminous LEDs
- 4.8mm LED
- AC/DC 4.5V

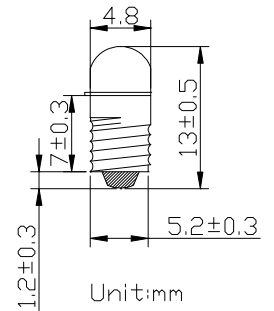
### ■ Applications

- Bicycle Light / Torch
- Dashboard Signal / Automotive Lighting

**Color Photo**



**Outline Dimension**

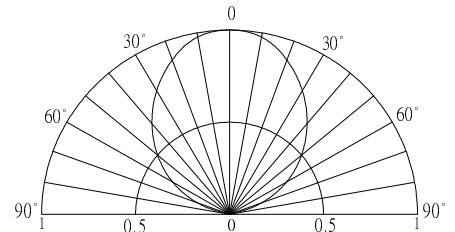


### ■ Absolute Maximum Rating

(Ta=25°C)

Item	Symbol	Value	Unit
AC/DC Forward Voltage	V <sub>F</sub>	5.5	V
Power Dissipation	P <sub>D</sub>	0.17	W
Operating Temperature	T <sub>opr</sub>	-30 ~ +85	°C
Storage Temperature	T <sub>stg</sub>	-40~ +100	°C
Lead Soldering Temperature	T <sub>sol</sub>	260°C/5sec	-

### ■ Directivity



### ■ Electrical -Optical Characteristics


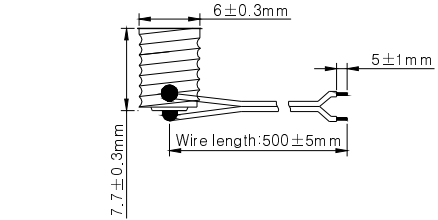
(Ta=25°C)

Part Number	Color	Lens Type	Control Voltage AC/DC (V)			Wd(nm)/CCT(K)*			Luminous Intensity* (mcd)		
			Min.	Typ.	Max.	Working Current: IF=20mA			Min.	Typ.	Max.
						Min.	Typ.	Max.			
OSE5-W5425PA1A-4.5V	Cool White	Water Clear	-	4.5	5.5	CCT:8500-18000K			2180	3000	-
OSE5-W4425PA1A-4.5V	Pure White	Water Clear				CCT:5500-8500K			2180	3000	-
OSE5-M3425PA1A-4.5V	Warm White	Water Clear				CCT:2000-2400K			1560	2180	-
OSE5-BB625PA3A-4.5V	Blue	Blue Transparent				465	470	475	1120	1560	-
OSE5-PPG25PA3A-4.5V	Green	Green Transparent				520	525	530	2180	3000	-
OSE5-YYA25PA3A-4.5V	Yellow	Yellow Transparent				585	590	595	1560	2180	-
OSE5-OOG25PA3A-4.5V	Orange	Orange Transparent				600	605	610	2180	3000	-
OSE5-RRA25PA3A-4.5V	Red	Red Transparent				620	625	630	1560	2180	-

\*1 Tolerance of measurements of luminous intensity is +15% \*2 Tolerance of measurements of forward voltage is ±0.1V

\*3 Tolerance of measurements of dominant wavelength is ±1nm

**Socket + Wire:**

Part Number	Product Picture	Product Dimensions
OSE05SA-1W500WW		
OSE05SA-2W700WW	