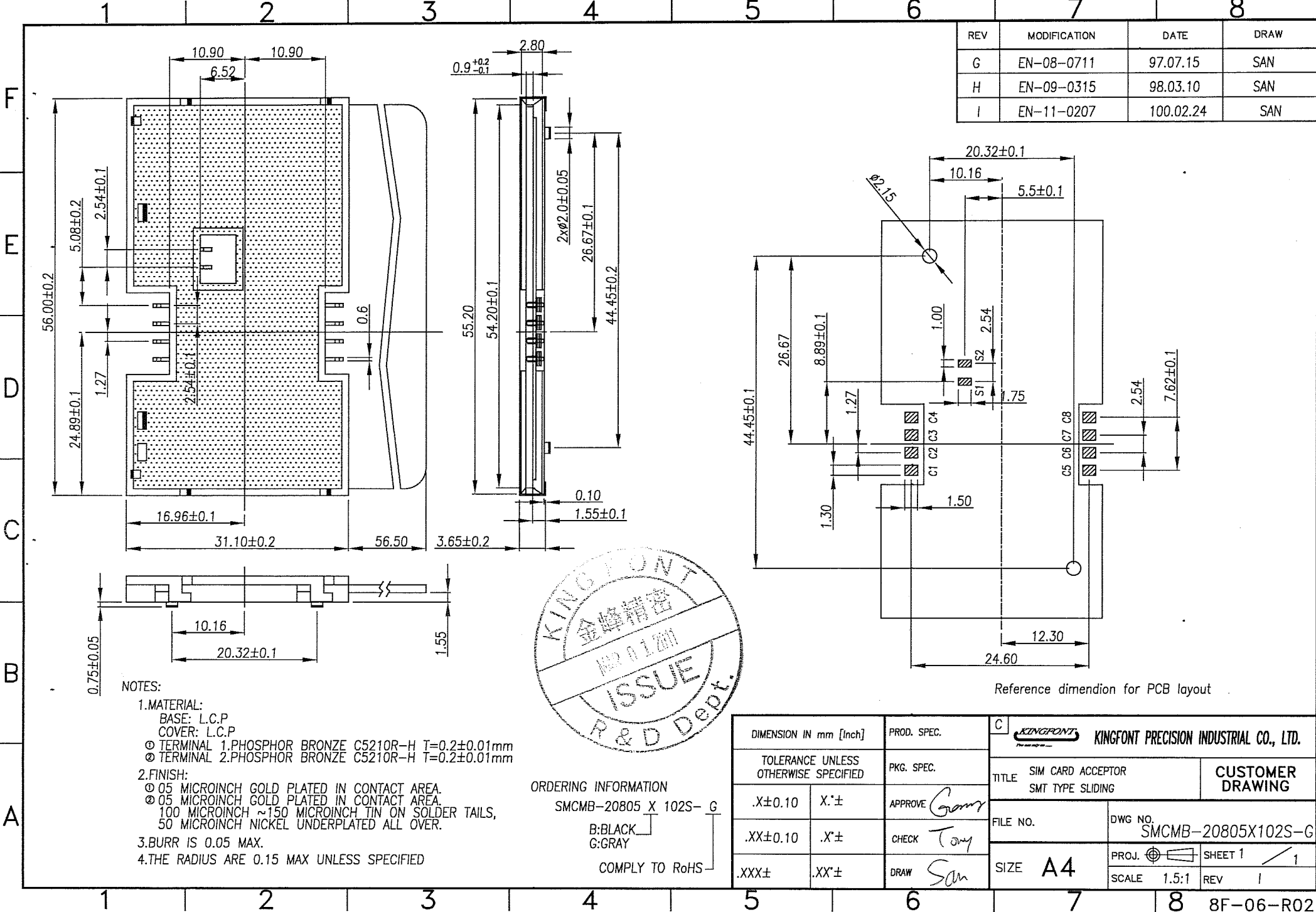
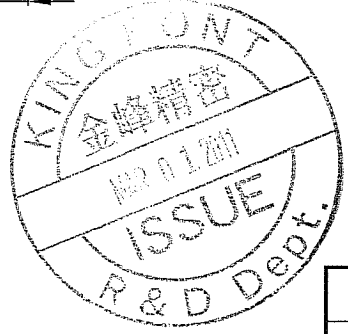


REV	MODIFICATION	DATE	DRAW
G	EN-08-0711	97.07.15	SAN
H	EN-09-0315	98.03.10	SAN
I	EN-11-0207	100.02.24	SAN



NOTES:

- MATERIAL:
 BASE: L.C.P
 COVER: L.C.P
 ① TERMINAL 1.PHOSPHOR BRONZE C5210R-H T=0.2±0.01mm
 ② TERMINAL 2.PHOSPHOR BRONZE C5210R-H T=0.2±0.01mm
- FINISH:
 ③ 05 MICROINCH GOLD PLATED IN CONTACT AREA.
 ④ 05 MICROINCH GOLD PLATED IN CONTACT AREA.
 100 MICROINCH ~150 MICROINCH TIN ON SOLDER TAILS,
 50 MICROINCH NICKEL UNDERPLATED ALL OVER.
- BURR IS 0.05 MAX.
- THE RADIUS ARE 0.15 MAX UNLESS SPECIFIED



ORDERING INFORMATION

SMCMB-20805 X 102S- G
 B:BLACK
 G:GRAY
 COMPLY TO RoHS

Reference dimension for PCB layout

DIMENSION IN mm [Inch]		PROD. SPEC.	C KINGFONT KINGFONT PRECISION INDUSTRIAL CO., LTD.	
TOLERANCE UNLESS OTHERWISE SPECIFIED		PKG. SPEC.	TITLE SIM CARD ACCEPTOR SMT TYPE SLIDING CUSTOMER DRAWING	
.X±0.10	X'±	APPROVE Gomy	FILE NO.	DWG NO. SMCMB-20805X102S-G
.XX±0.10	.X'±	CHECK Tony	SIZE A4	PROJ. SHEET 1 / 1
.XXX±	.XX'±	DRAW San	SCALE 1.5:1	REV I