

E10 DC Screw LED Lamp

E10 DC Screw LED Lamp is LED which requires a resistor in series to permit direct connection to DC 4.5V.

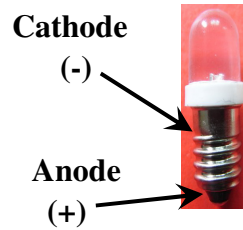
■ Features

- High Luminous LEDs
- 8mm LED
- DC 4.5V

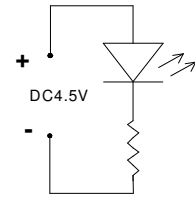
■ Applications

- Bicycle Light / Torch
- Dashboard Signal / Automotive Lighting

Photo



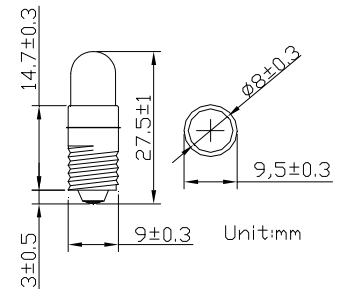
Circuit Diagram



Color Photo



Outline Dimension

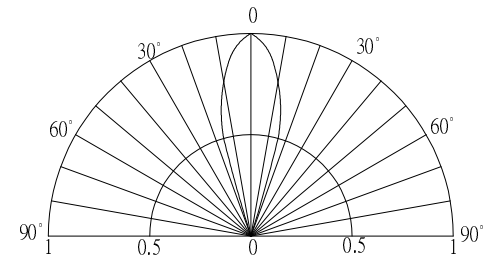


■ Absolute Maximum Rating

(Ta=25°C)

Item	Symbol	Value	Unit
DC Forward Voltage	V _F	5.5	V
Power Dissipation	P _D	0.17	W
Operating Temperature	T _{opr}	-30 ~ +85	°C
Storage Temperature	T _{stg}	-40 ~ +100	°C
Lead Soldering Temperature	T _{sol}	260°C/5sec	-

■ Directivity



■ Electrical -Optical Characteristics

(Ta=25°C)

Part Number	Color	Lens Type	Control Voltage DC (V)			Wd(nm)/CCT(K)*			Luminous Intensity* (mcd)		
			Working Current: IF=20mA								
			Min.	Typ.	Max.	Min.	Typ.	Max.	Min.	Typ.	Max.
OPDB-W54K8B31F	Cool White		-	4.5	5.5	CCT:8500-18000K			25000	30000	-
OPDB-W44K8B31F	Pure White					CCT:5500-8500K			25000	30000	-
OPDB-M54K8B31F	Warm White	■				CT:2700-3200K			14400	18000	-
OPDB-B56A8B33F	Blue	■				465	470	475	8400	10000	-
OPDB-G5GA8B33F	Green	■				520	525	530	25000	30000	-
OPDB-5YKA8B33F	Yellow	■				585	590	595	14400	18000	-
OPDB-O5PA8B33F	Orange	■				600	605	610	12000	14400	-
OPDB-5RKA8B33F	Red	■				620	625	630	14400	18000	-

*1 Tolerance of measurements of luminous intensity is +15%

*2 Tolerance of measurements of forward voltage is ±0.1V

*3 Tolerance of measurements of dominant wavelength is ±1nm