

Specification

Product Name: High power SMD3030 1-LED **Applications**

Item No.: OLLBN.1.44W3-HPy3

* Suitable for 6~18cm depth signs such as channel letters, metal letters, light boxes, decoration, etc.



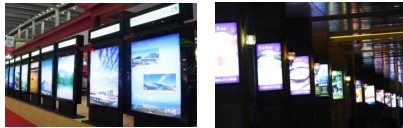
Features

1. Super high lumen SMD3030 LED, each LED can reach **120-130lm**;
2. Maximum module quantity per string up to 20pcs;
3. Waterproof with ABS injection housing
4. Overmolded housing design with 160degree len, wide beam angle, nice and upscale.
5. Adopt aluminum PCB board, good heat sink, which extend the lifetime of module.
6. Certification: CE and RoHs
7. Constant current driving.



Installation

1. Adhesive tape backing on modules used as an installation aid only, permanent adhesion is done with screws;
2. Single module as a unit can be cut accordingly.



Warranty

* 3 years warranty, 50,000H life span

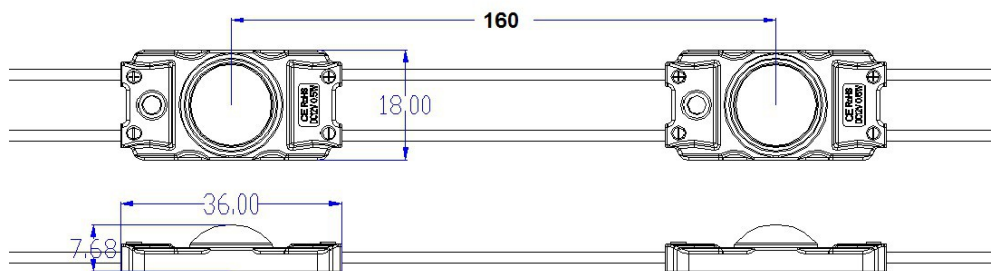
Technical Parameters:

Item No.	LED Color	Color Temperature(K)	Beam Angle (°)	Luminous Flux (lm)	Working Voltage (VDC)	Power (W)	Dimension (mm)
OLLBN.1.44W3-HPy3	Pure White	6000-6500	160	120-130	12	1,44	36*18*7.7

Others:

Item No.	LED Color	Standard Qty per string (pcs)	Storage Temp (°)	Working Temp (°)	Material	Net Weight (g)	IP Rank
OLLBN.1.44W3-HPy3	All	20	-25~60	-20~40	ABS	6,0	65

Profile Drawings:



Package:

200pcs/bag

14bags/CTN



1. Carton Dimension: 50.5*28*34cm;
2. 20 modules per string, 20 strings per bag, 14 bags per outer carton, 2800 modules in total;
3. Net Weight (N.W) : 18.5KG (1±10%)
4. Gross Weight (G.W): 19.5KG (1±10%)
5. The actual packed quantity and weight subject to change without prior notice.